

# SIMPLIFY THE MANAGEMENT OF YOUR WINDOWS NETWORK.

## MetaLAN

- *Up and running in 5 minutes*
- *Agent less - No need to install anything on the endpoints*
- *Free download - No registration required*

[Learn More...](#)



## How to install Remote Server Administration Tools (RSAT) on Windows Server 2016

### Remote Server Administration Tools (RSAT) Background

The Remote Server Administration Tools (RSAT) have been with Windows Server since Server 2000. On various versions of Windows the tools are sometimes included and sometimes they need to be downloaded from the Microsoft website and installed. In Server 2016 these tools are included as optional features and can be installed using the Add Roles and Features wizard in Server Manager; no download is required.

The following tools are included as part of the installation:

- SMTP Server Tools
- Hyper-V Management Tools
- Hyper-V Module for Windows PowerShell
- Hyper-V GUI Management Tools
- Windows Server Update Services Tools
- API and PowerShell cmdlets
- User Interface Management Console
- Active Directory Users and Computers Snap-in
- Active Directory Sites and Services Snap-in
- Active Directory Domains and Trusts Snap-in
- Active Directory Administrative Center Snap-in
- ADSI Edit Snap-in
- Active Directory Schema Snap-in (Not Registered)
- Active Directory Command Line Tools

- Active Directory Module for Windows PowerShell
- IIS Management Tools
- IIS Management Console
- IIS Management Compatibility

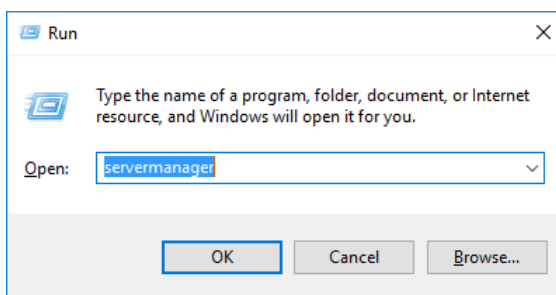
## Prerequisites for installing Remote Server Administration Tools (RSAT)

You will require a Windows Server 2016 computer with the "Graphical Management Tools and Infrastructure" installed to install the Remote Server Administration Tools (RSAT) using the Server Manager graphical user interface.

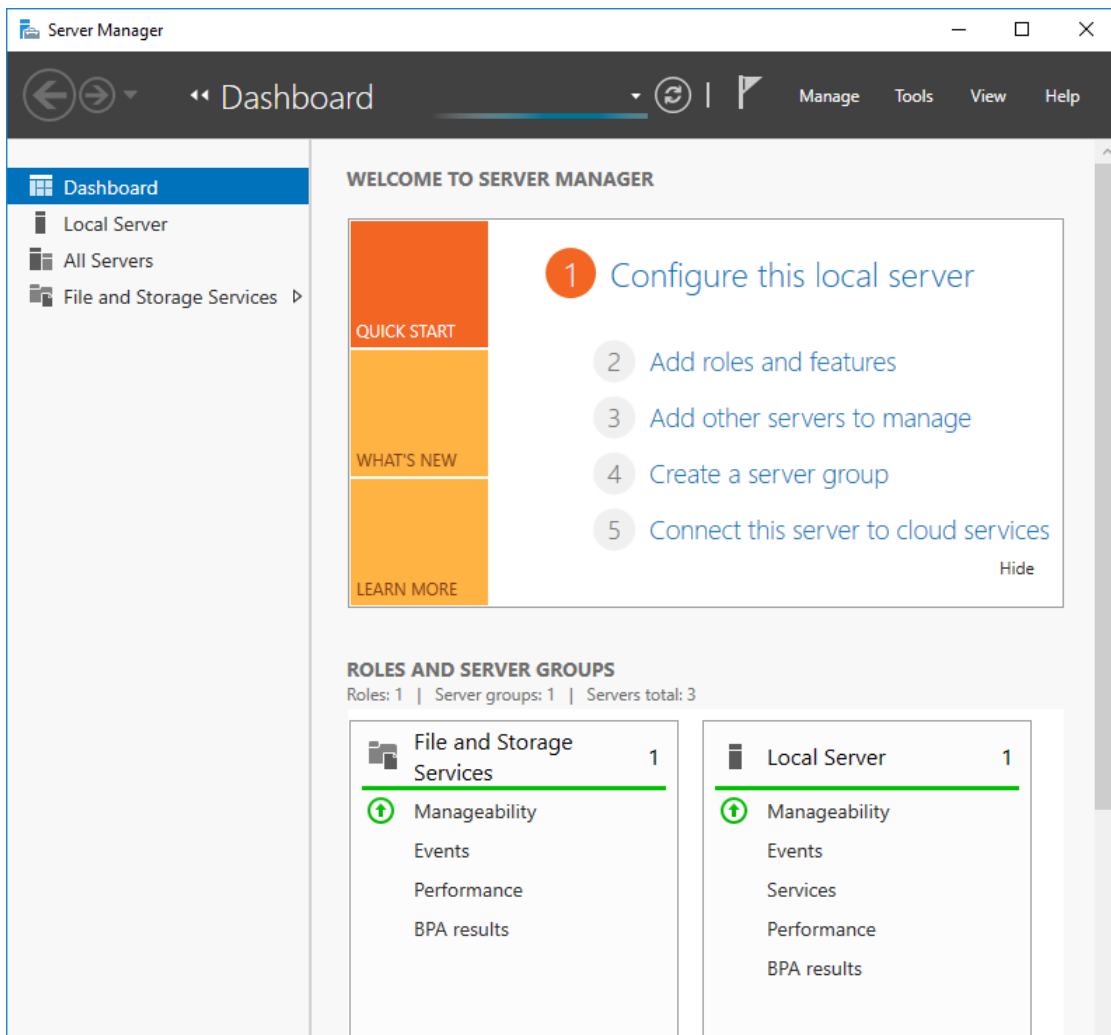
## Instructions for installing Remote Server Administration Tools (RSAT)

To install the Remote Server Administration Tools (RSAT) on Windows Server 2016 please follow these instructions.

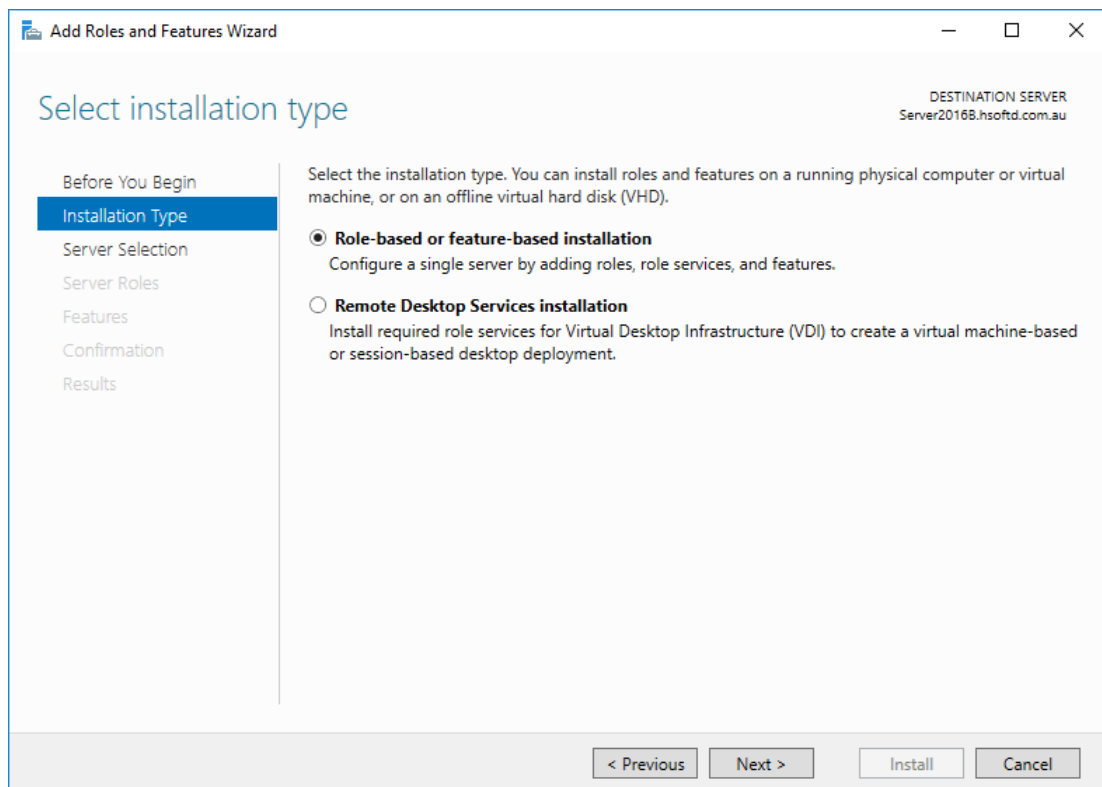
1. On the Windows Server 2016 open Server Manager. If Server Manager does not start by default press the "Windows + R" keys, Type "servermanager" in the "Open" field and press "Enter" or click the OK button.



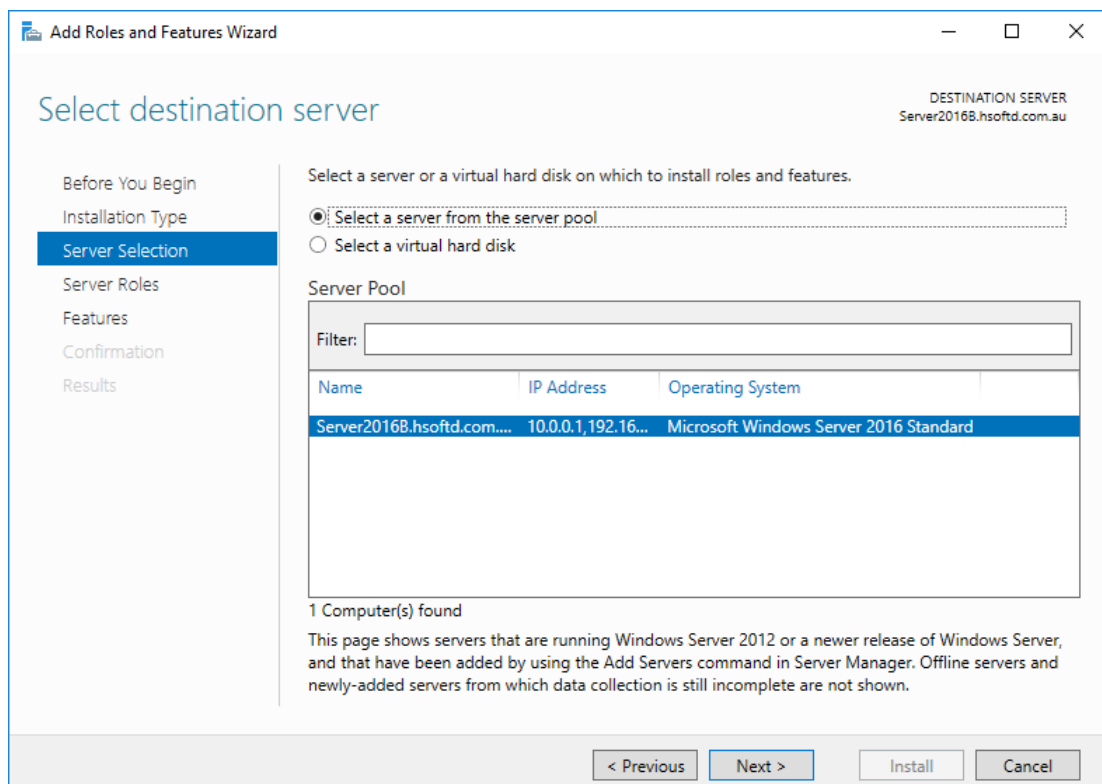
2. On the Server Manager main windows Click "Add roles and features".



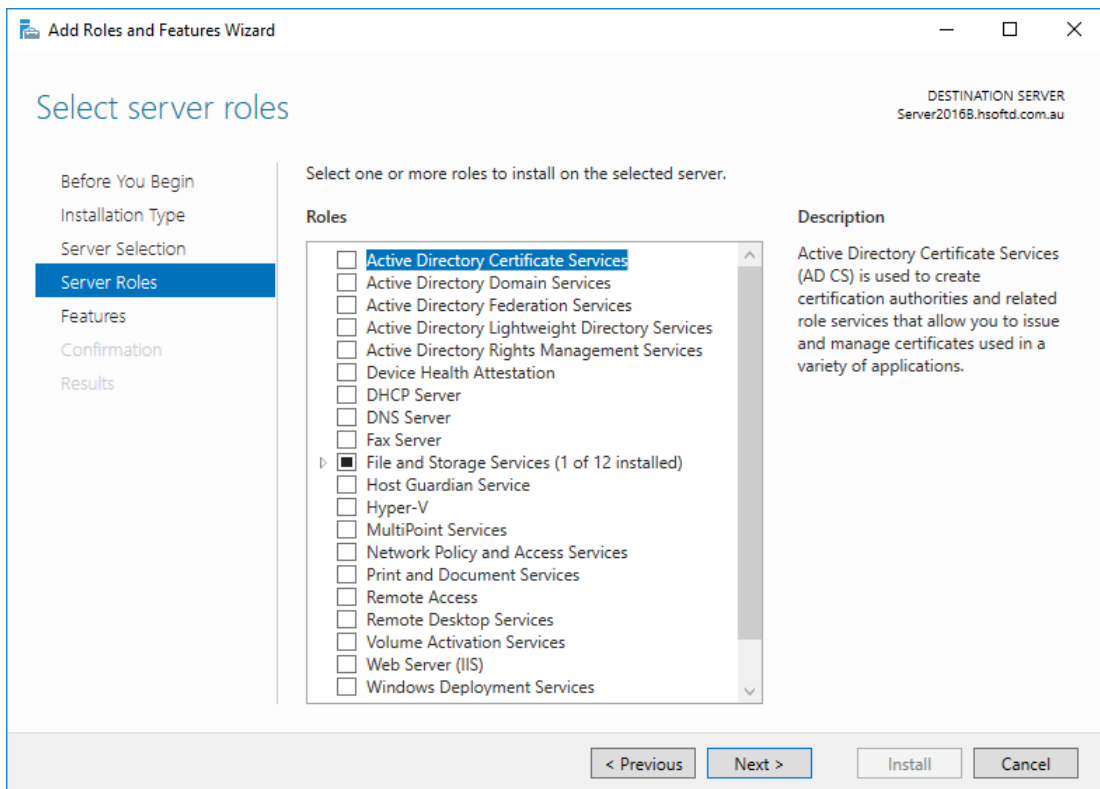
3. In the "Add Roles and Features Wizard" under "Installation Type" check the "Role-based or feature-based installation" radio button and click "Next"



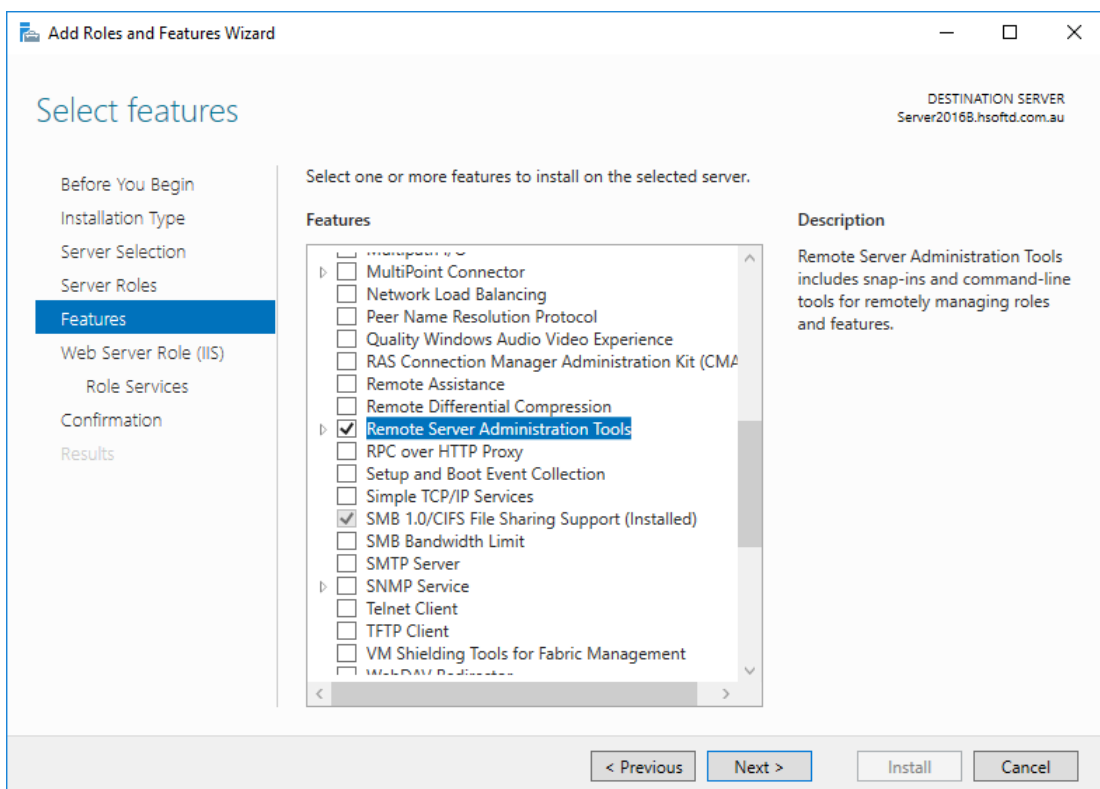
4. In the "Add Roles and Features Wizard" under "Server Selection" check the "Select a server from the server pool" radio button, select the server you want to install the Remote Server Administration Tools (RSAT) on and click "Next"



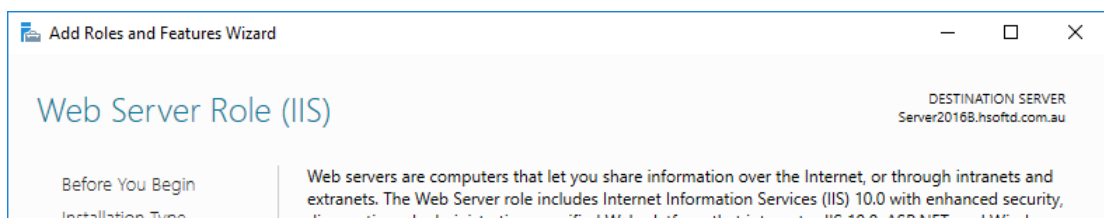
5. In the "Add Roles and Features Wizard" under "Server Roles" click "Next"

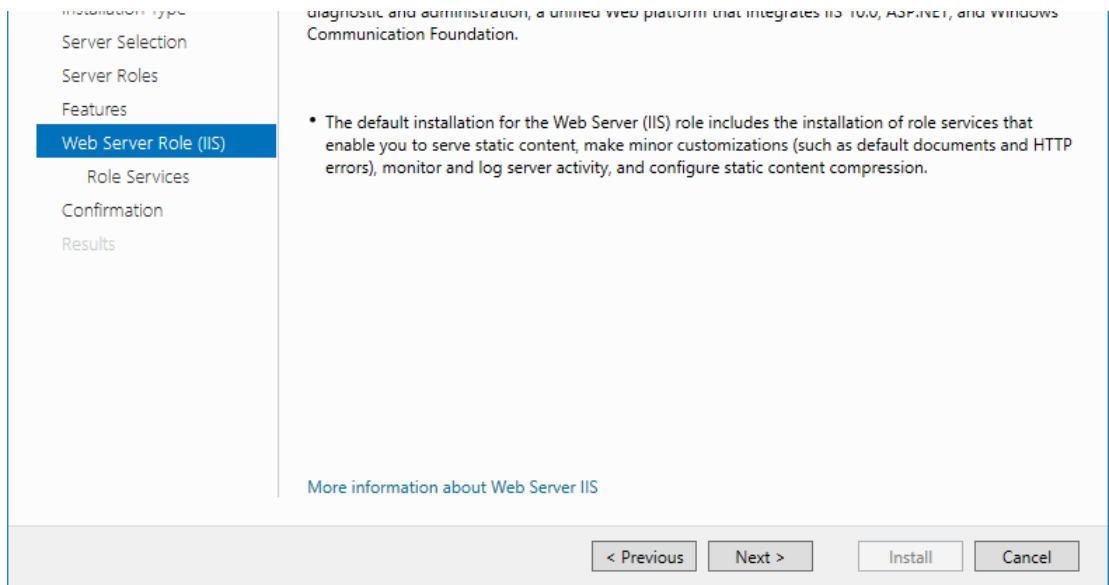


6. In the "Add Roles and Features Wizard" under "Features" scroll down and check the "Remote Server Administration Tools" check box. Click "Next".

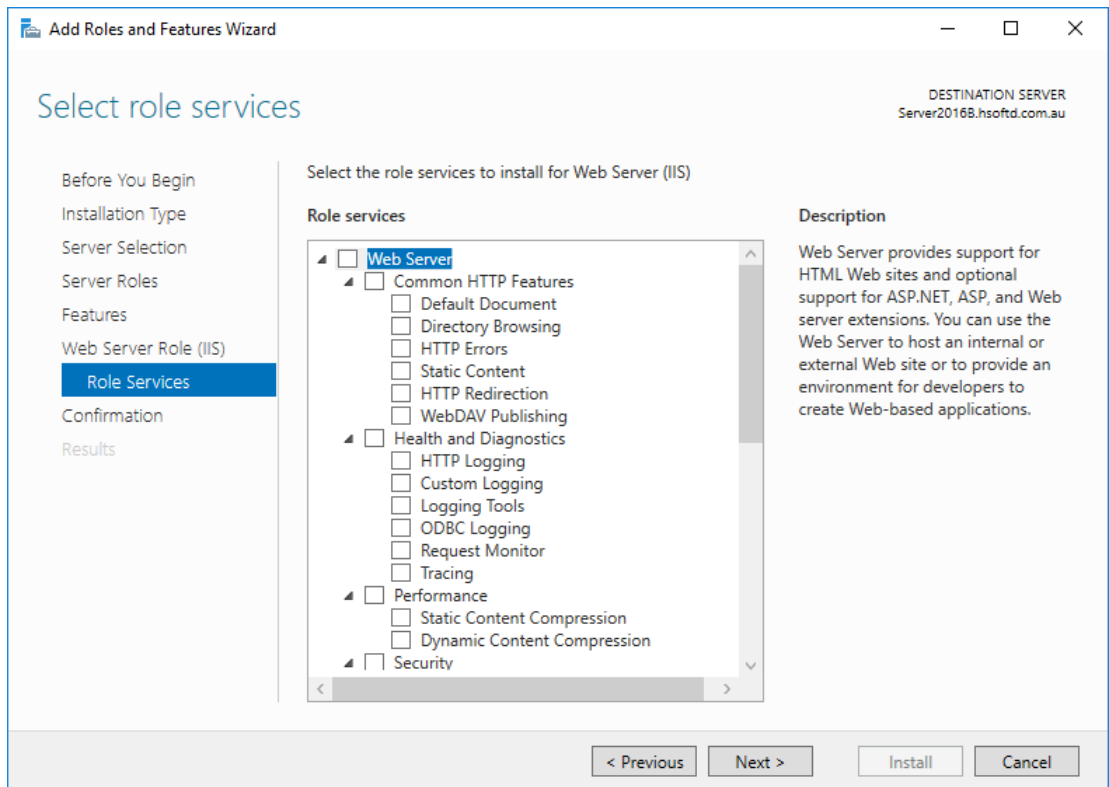


- If prompted to add features accept the defaults and click "Add Features", then click "Next".

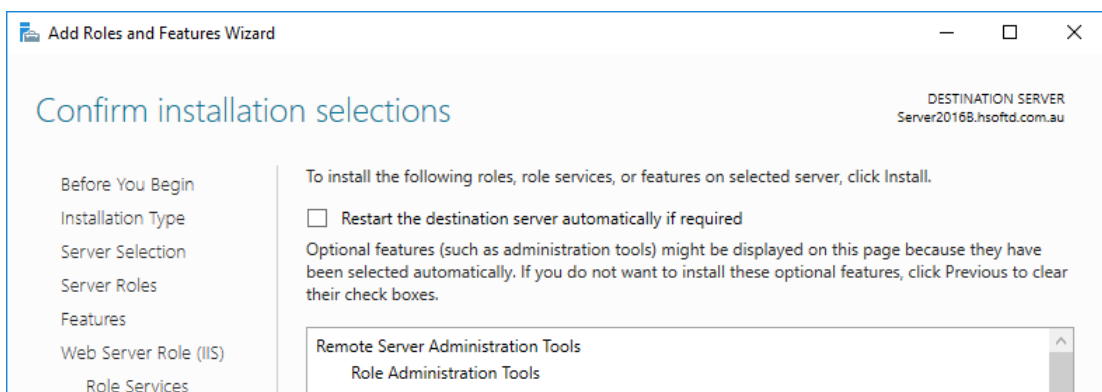


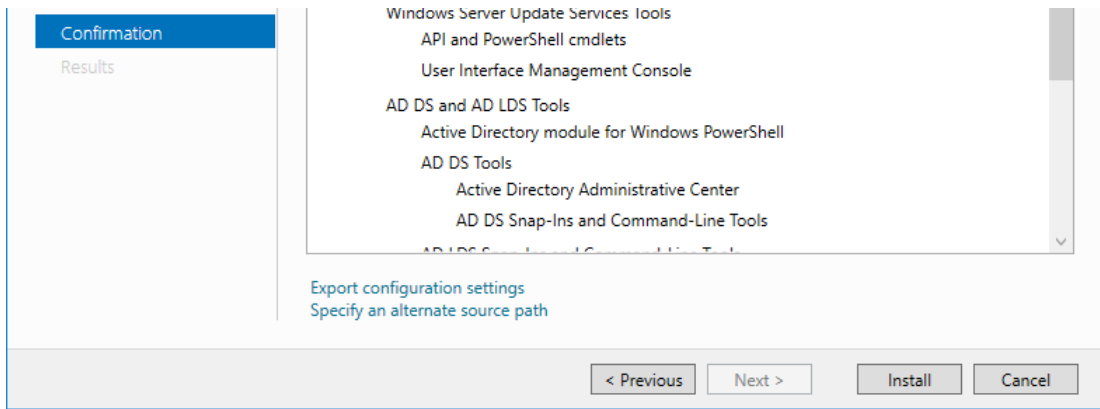


- If the Web Server Role page displays, accept the defaults and click “Next”



7. In the “Add Roles and Features Wizard” at the “Confirmation” page click “Install” to begin the installation of the Remote Server Administration Tools (RSAT)





8. The installation of the Remote Server Administration Tools (RSAT) will begin and the progress will be displayed. This installation should not require a restart of the server.

9. When the installation of the Remote Server Administration Tools (RSAT) is complete you can find the RSAT tools under the "Tools" menu in "Server Manager".